



EUROTRAY[®]
Support Systems



**SOLAR
MOUNTING
SUPPORT
SYSTEMS**
SM01



+98.000 Tons
Annual Capacity

25 years
corrosion
warranty



+2 GW
Solar Projects Achieved

10 years
product
warranty



84
Countries Where We Export



+7.500
Completed International Projects

350
35 years experience
in steel industry
employees
10 years experience
in solar energy sector



Empowering Solar Energy with Eurotray

Your Reliable Partner for Solar Mounting Support Systems

In a time when renewable energy is crucial for a sustainable future, Eurotray stands out in the solar industry, as a supplier of solar mounting support systems that is committed to changing how solar energy is used.

At Eurotray, we know how important solar energy is to fighting climate change and moving towards a greener future. Our mission is simple: to provide innovative and reliable solar mounting support systems that help our customers use solar energy to its fullest.

What makes Eurotray special is our sustainability in production, strict quality standards, and masterful technical knowledge gained through 35 years of experience in the steel industry that come together to create the best Solar Mounting Support Systems for your projects. We focus on durability and thoughtful designs made to withstand tough environmental conditions while maximizing energy production, aiming for every installation to meet and exceed industry standards.

Sustainability is central to everything we do. From the materials we use to our manufacturing processes, we prioritize eco-friendly practices to minimize our environmental impact, and we are committed to a greener future. We have helped avoid up to 2.8 million tons of CO² emissions per year thanks to our 2GW of successful projects worldwide. Choosing Eurotray as your supplier of solar mounting support systems means investing in a cleaner, better future for generations to come.

Partner with us today to start on the journey to a brighter, more sustainable future. Together, let's harness the power of the sun and create a cleaner, greener world.





çemesan®

Steel and More...

Founded in 1994, our company continues to serve as a steel service centre for the leading industrial companies worldwide. We are constantly increasing our production capabilities and capacity with new slitting, cut-to-length and multiple cutting lines. In addition, we are continually broadening our special profile production for various different sectors such as: Solar energy, lift manufacturing, HVAC, facade systems and automotive sectors with our steel cold forming lines.





EUROTRAY®

Support Strengthened by Steel

As an experienced steel manufacturer for Cable Management Support Systems and Solar Ground Mounting Support Systems, Eurotray provides reliable support in every project with its innovative design and high quality production. Strengthen the foundation of your projects with Eurotray and take a step forward with solutions backed by quality.



GROUND MOUNT SOLAR SYSTEMS

Cost Effective and Competitive Design

We use high-strength steel grades in our designs to reduce the weight of structures which brings a considerable reduction in raw material requirements to offer competitive prices and transportation costs to our customers.

Robust Structure

Using high-strength steel grades in our designs allows us to give higher load-bearing capacity and static stability to each structure in accordance with Eurocode standards.

Easy to Assemble

Thanks to our “installer-friendly”, functional, and customized designs, Eurotray Ground Mount Systems offers quick and easy installation. Our original fasteners allow faster panel mounting with less labour. Optimal span widths targeted in design are not only for reducing the weight of the overall system but also to ease and shorten the installation work on site.

Compatible Solutions

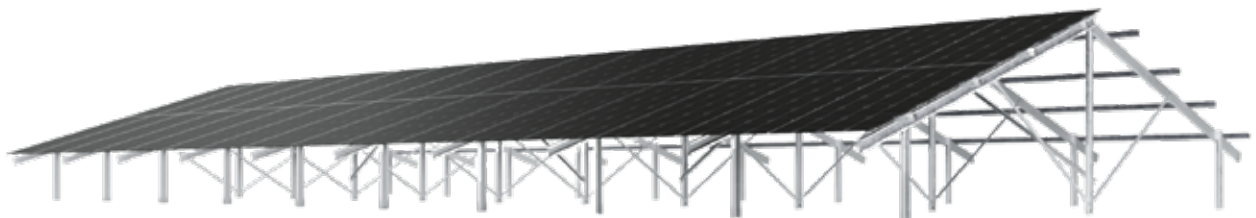
Our engineering team offers standard and customized solutions compatible with various project requirements. Bi-parted posts and adjustable fastening features enable high adaptability to sloped terrains. Customized foundation and footing solutions are applicable under different geotechnical conditions, such as driven piles, cast-in-place foundations, or concrete base foundations.

Warranty

Eurotray Ground Mount Systems can be customized with different types of coatings, like HDG, ZAM, Z600, Epoxy Coating, Geomet, etc., for different corrosivity categories, providing optimal corrosion resistance and durability in accordance with International Standard ISO 14713.

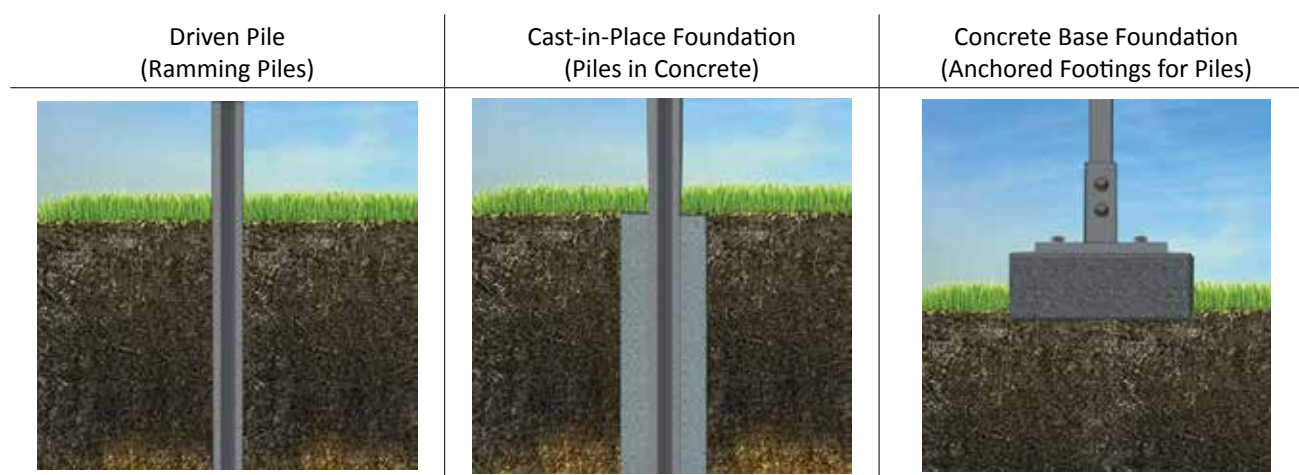
Shorter Lead Time

Thanks to the stock of steel raw materials in the Steel Service Center of our CEMESAN Group, Eurotray shares its advantage with its customers in the form of fast and reliable deliveries.



Application	Ground Mount
Module Type	Monofacial, Bifacial - framed or unframed
Module Height	30mm-40mm (customized solutions available for different module dimensions)
Orientation of Modules	Portrait (Vertical) or Landscape (Horizontal)
Table Configuration / Layout	1V, 2V, 3V, 4V, 2H, 3H, 4H, 5H, 6H with tables more than 40 meters in lengths.
Module Fastening	Aluminum clamps or stainless-steel bolts
Tilt Angle	5° - 35° or as per project requirements
Ground Clearance	According to project requirements and static calculations
Span	According to soil structure and static calculations
Foundation	Driven Pile (Ramming Piles) Cast-in-Place Foundation (Piles in Concrete) Concrete Base Foundation (Anchored Footings for Piles)
Structure Material	S355 – S420 – S550
Coating	ISO 1461:2009: Hot-dip Galvanizing 55µ-120µ EN 10346_2015: Pre-galvanized Z275 – Z600 ZM (ZAM): Zinc Magnesium Coating ZM 310 – ZM 430 Epoxy Coating on HDG: Up to 400 µ Total Coating Thickness
Fasteners	Carbon steel grade with 8.8 with HDG, Geomet or similar coating and/or stainless steel
Standards	ISO 9001:2015 Design and Sale of Solar Panel Mounting Systems; EN 1991-1-1: 2010 Eurocode 1. Actions on Structures; EN 1993-1-1: 2010 Eurocode 3. Design of Steel
Warranty	10 years
Service Life	25 years

FOUNDATION TYPES



MONO POST SYSTEMS: E-MPS-

Available South System Configurations;
2VS, 3HS and 4HS



Biparted Posts Connection Section



DUAL POST SYSTEMS: E-DPS-

Available South System Configurations;
2VS, 3VS, 4VS, 2HS, 3HS 4HS, 5HS and 6HS



Pile-Beam - Cross Beam Connection Section

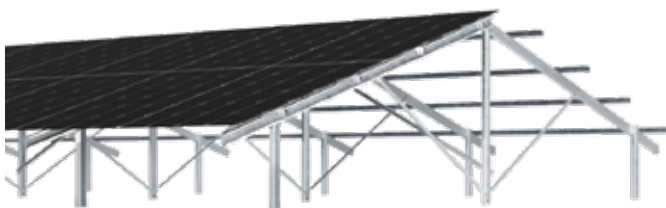


Beam - Purlin Connection Section



EAST WEST SYSTEMS: E-EWS-

Available East-West System Configurations;
2VEW, 3VEW, 4VEW, 2HEW, 3HEW, 4HEW



Purlin - Module Clamping Detailed Section



TRACKER SYSTEMS: E-TS-40

Single Axis (Double Row) Tracker System

- High-strength steel grades used in its design reduces the weight of structures.
- Slewing Drive Technology eliminates the use of drive-shafts and extra cabling.
- Self-grounded system eliminates additional grounding materials and installation costs.
- No welding required during installation.
- Tables not linked with drive shafts ease the operations of maintenance vehicles.

All these features enable easy, fast and cost-efficient installations, after installation service and maintenance.

Automatic Tracking

Tracker system, while tracking the sun, avoids shading automatically to maximize power generation.

Storm Protection Mode Function

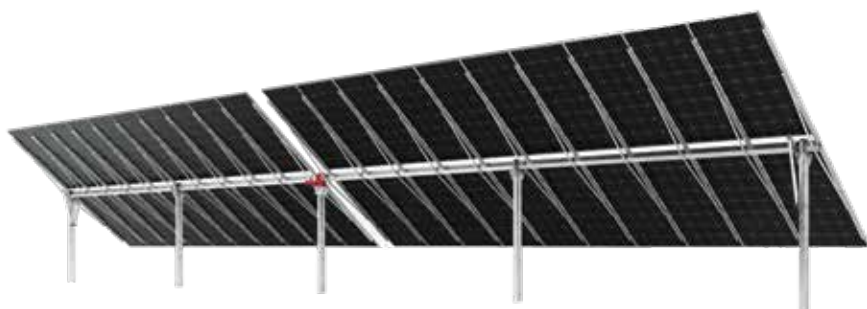
In case of receiving the pre-set wind speed limit from sensors, system switch to storm protection mode automatically to ensure the stability and safety of the system.

Snow Mode Function

Snow sensors automatically activates "snow mode" to protect the system.

Cleaning Position Function

This function can be activated by remote control to ensure easy and fast cleaning and maintenance.



Bearing and Damper Assembly



Purlin Support Connection



Purlin Support Beams



Middle Slew Drive Assembly



Structure Material	S355 – S420
Coating	ISO 1461:2009: Hot-dip Galvanizing 55µ-120µ EN 10346_2015: Pre-galvanized Z275 – Z600 ZM (ZAM): Zinc Magnesium Coating ZM 310 – ZM 430
Foundation	Driven Pile (Ramming Piles) Cast-in-Place Foundation (Piles in Concrete) Concrete Base Foundation (Anchored Footings for Piles)
Table Configuration	2V – Two modules Portrait
Driving Capacity	40 PV Modules
System Voltage	1000 / 1500VDC
Driving Type	Slewing Drive & DC Motor
East-West & North-South Dimension	4,6 m & 23,3 m
Structure Height	2,8 m. Adjustable acc. to Project Requirements
Tracking Range	±60°
Tracker Size	L23,3 x W4,6 x H 5.0 m
Wind Load	Up to 140 km/h
Wind Protection	Safety Wind-Stow Mode
Night-Time Stow Mode	Available
Back-Tracking Mode	Available
Solar Tracking Method	Algorithm with GPS Input
Control Electronics	MCU
Interface	RS485 / Modbus
Tracking Accuracy	+/- 1°
Connection Type	Connections with Fasteners, No Welding Required
Power Consumption	10 kWh/Y
Warranty	10 Years for Steel Structure. 5 Years for Electrical Components and Electronics such as Slewing Drives, Motors, Control Systems.

Supporter of Over **2GW** Projects Worldwide



The Netherlands



Serbia



Lithuania



CABLE MANAGEMENT SYSTEMS



INVERTER RACK



OEM MANUFACTURING



CARPORT SYSTEMS



EARTHING SYSTEMS



Head Office

Sekerpinar Factory
CEMESAN A.S.
Sekerpinar- Kocaeli / TURKEY

Dilovası Factory

EUROTRAY A.S.
Dilovası- Kocaeli / TURKEY

Germany

EUROTRAY
Stahl & Metall GmbH
Düsseldorf / GERMANY

Middle East

EUROTRAY Dubai
Dubai / UAE

www.eurotray.com
info@eurotray.com



EUROTRAY

Excellent Technical Support

Absolute quality and value come together with superior technical excellence and expertise. With our professional team, we are committed to achieving the highest standards in every project.

Support in Project Management

With effective communication and coordination at every stage, we provide all the support required for the successful completion of the project. We endeavor to understand the needs of our customers and exceed their expectations, meticulously managing every detail of the project.

Support in Holistic Solution

Starting with our innovative engineering approach, we continue with our high quality production processes. From the packaging of our products to the logistics phase, we work diligently at every step.

